




Dear detectives,  
Its time to put on your detective hats!   
Your job is to find objects around your house that have the sounds we have learned:  
**sh ch th ck wh ph ng nk**  
After finding all your objects:  
A) Try to write/spell 1 object with each sound  
B) draw the other object  
Good luck!!

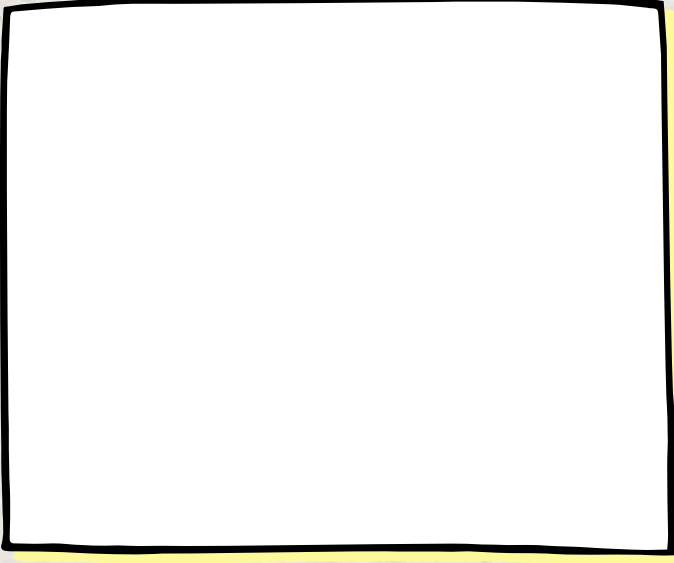
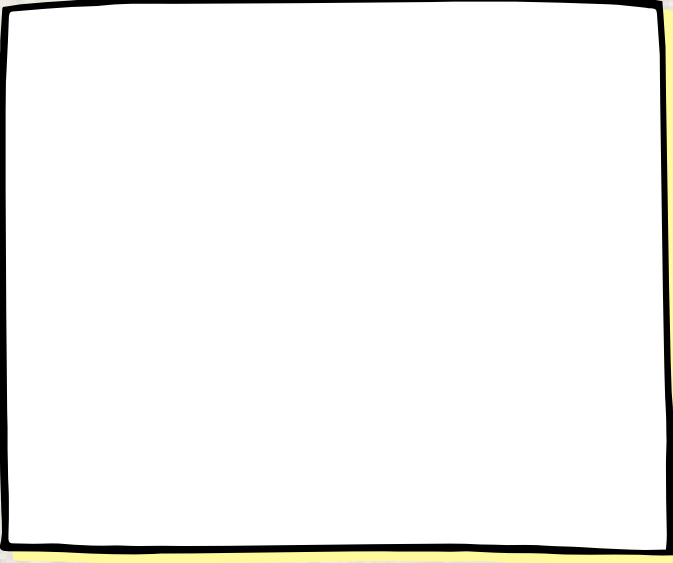
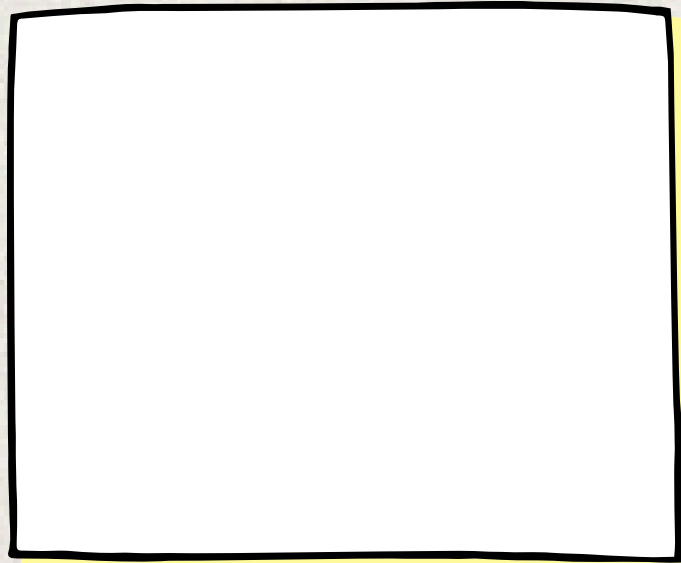
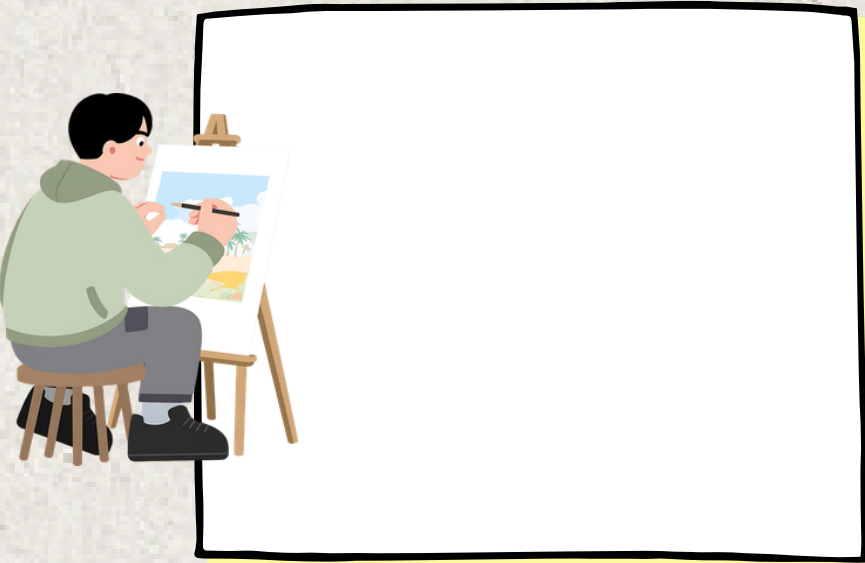
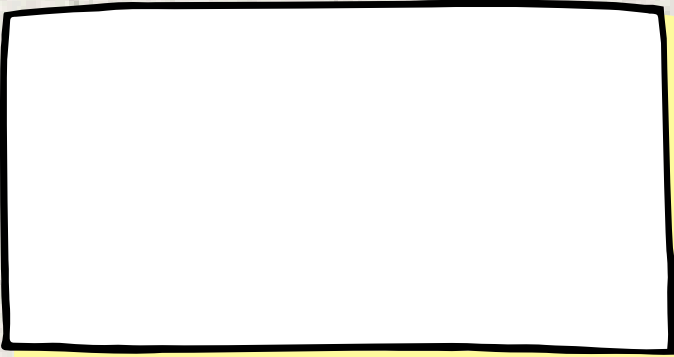
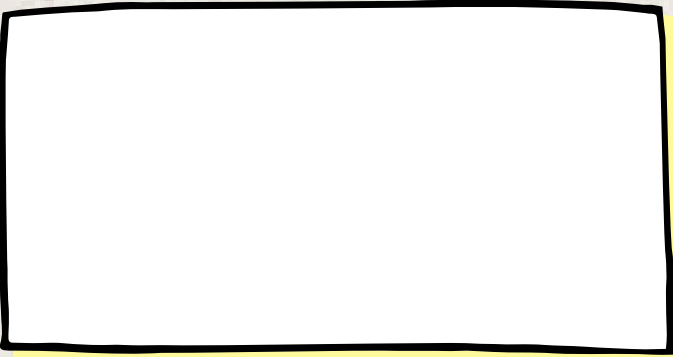
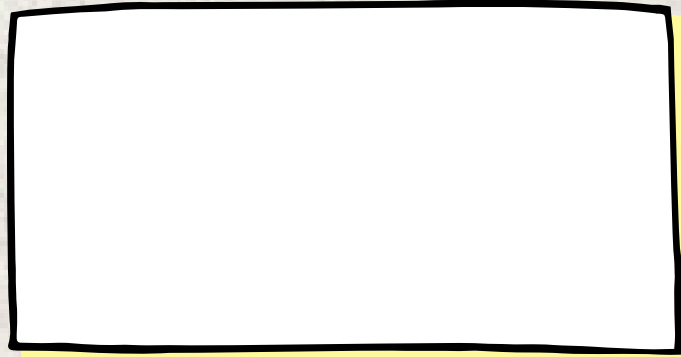
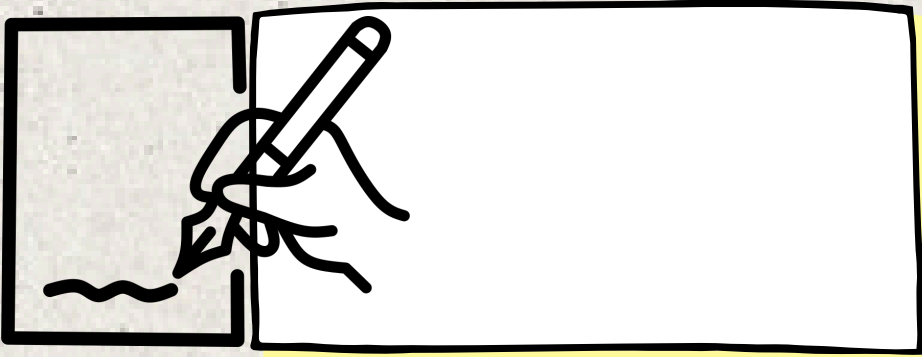


ch

sh

th

ck





ph

wh

ng

nk

